

Charley Robinson
10 Bradley Lane
Sandy Hook, CT 06482



Would you like to speak to
our chef about your meal?



ny/conn news



The newsletter of The NY/Conn Chapter of The New England MG 'T' Register

April, 2006



Great Buddha Hall, Chuang Yen Monastery

The Progressive Dinner will take us on a tour of this building built in the style of the Tang Dynasty (618-907AD). Constructed without internal pillars, the building is 84 feet tall, contains 24,000 sq. ft. and can accommodate 2,000 people in the main hall. Inside the hall is a 37-foot statue of the Buddha Vairocana—the largest Buddha statue in the Western hemisphere. Encircling the large statue are 10,000 small statues of the Buddha on a lotus terrace.



Upcoming Events:

- April 23: St. George's Day (England's Patron Saint) Drive your British cars.
- **April 29: Progressive Dinner, Hurd's, Johnson & Silvestre (See page 3)**
- May 6: Bonhams & Butterfields Collector Car Auction, Larz Anderson Museum, Brookline, MA
- 2006 Calendar, see page 4



NY/Conn Website: <http://nyconn.org>

Charley Robinson
Managing Director
Editor (Newsletter)
10 Bradley Lane
Sandy Hook, CT 06482
203-270-1244
director@nyconn.org

Andrea Fanelli
Membership
Treasurer
356 E. Grassy Sprain Road
Yonkers, NY 10710
914-961-7105
membership@nyconn.org

Jan Hurd
Photo Archive
11 Partridge Drive
Ridgefield, CT 06877
(203) 438-2796
photos@nyconn.org

Ed Flax
Webmaster
5 Oxford Court
Princeton Junction, NJ 08550
(609) 275-8690
webmaster@nyconn.org

Membership Renewal

All memberships expire at the end of November. Send a check made payable to **Andrea Fanelli or cash**. (See her address above). All NY/Conn members should also be current members of The New England MG 'T' Register, PO Box 1957, Cary, NC 27512-1957; 919-851-3030; fax: 919-858-0386, email: athomas990@aol.com, or on the web at <http://www.nemgt.org>.

British Marque Car Club News

As a participating club, NY/Conn members are entitled to a discount on subscriptions to the British Marque monthly newspaper; \$12 instead of the usual \$20. The marque features news and events from more than 100 British car clubs and is published 11 times a year. Check them out online at www.britishmarque.com or subscribe today.

PARTICIPATING CLUB MEMBER SUBSCRIPTION

11 ISSUES -- \$12.00
(CANADA -- \$15.00 U.S.;
U.K. AND ELSEWHERE OVERSEAS -- \$20.00 U.S.)

NAME _____
ADDRESS _____
CITY _____ STATE/ZIP/ _____
PROV. POSTAL CODE _____

PARTICIPATING CLUB NAME _____

Submit cheque and form to: **ENTHUSIAST PUBLICATIONS, LLC**
5 OLD NASONVILLE ROAD
HARRISVILLE, RI 02830-1905

Please check:

NEW RENEWAL 1 YR. 2 YR.



Schedule of Events (Cont.)

24: Simsbury, CT – 22nd Annual Fly-In and Car Show, Simsbury Airport, Simsbury, CT; www.simsburyfc.com
27-10/1: Carlisle, PA – Fall Carlisle Collector Car Swap Meet & Corral, www.carsatcarlisle.com

30: Long Island, NY – Shelter Island Tour, DiRenno's

30: Somers, CT – British Autumn show. (Tent.)

October

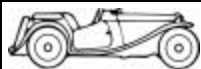
- 1: Shelton, CT – CT Jaguar Club "Purr-Inn", Indian Wells State Park, www.jcna.com/clubs/jcsne
- 1: Falmouth, MA – British Legends Car Show, CCBCC. <http://www.capecodbritishcarclub.org/>
- 4-7: Hershey, PA – Hershey Fall Meet, Flea market, car corral and car show. <http://local.aaca.org/hershey/>
- 7: CT – CT MG Club Annual Ct. Food Bank Charity Run, all clubs invited. www.ctmgclub.com
- 7: Block Island, RI – Antique Car & Harvest Festival
- 7: Somers, CT – Gary Booker's 6th Annual Brit & Foreign Auto jumble. 10AM-3PM. Rain or Shine. Pleasant View Golf Center, Rt. 83, Info: 203-230-9782 (day); 203-248-9255 (even.); 203-530-9013 (cell)
- 14: Manchester, VT – Old Speckled Hen Tour and Mount Equinox Climb. <http://www.equinoxmountain.com/skylinedrive/race.htm>
- 14-17: Cape Cod, MA - British Legends Car Show. www.capecodbritishcarclub.org
- 15: Straasburg, NY – Gathering of the Old Cars,
- 21: NY – Culture In The Country, Judy Johnson & Patricia Silvestre**
- 29: Daylight Savings Time Ends
- 31: Halloween

November

- 5: NY-CT – Following Francis for Frostbite, Francis Tuoti**
- 5: Guy Fawkes Day
- 7: Election Day
- 11: Veteran's Day
- 23: Thanksgiving

December

- 3: Bethel, CT – NY/Conn Holiday Brunch, Stony Hill Inn, (or submit a viable alternative)**
- 25: Christmas



Schedule of Events (Cont.)

9: Simsbury, CT – Fifth Annual Valley Classic Wheels Benefit Car Show.

www.valleyclassicwheels.com

15: **Yonkers, NY – Fanelli's – Len's Happy MG Birthday party**

28-30: Moodus, CT – Connecticut Jazz Festival, Sunrise Resort, Rt. 151.,

www.ctjazz.org

30: Brookline, MA – Day of Triumph - Sponsored by the New England Triumph Club. Larz Anderson Auto Museum, 15 Newton Street, 02445;

617.522.6547; 617.524.0170 Fax: www.mot.org.

August

12: **Sandy Hook, CT – Robinson/Beck "Fun In The Sun"**

19: Rhinebeck, NY – Old Rhinebeck aerodrome British Car Club Festival (Tent.)

20: Brookline, MA – MG/Rover Day - Sponsored by the Bay State MGA Club and the Bay State Rover Club. Larz Anderson Auto Museum, 15 Newton Street, 02445; 617.522.6547; 617.524.0170 Fax: www.mot.org. Registration = \$5 for Rovers and \$15 for MG's.

25-27: Lakeville, CT – Cape Cod British Car Club, Wicked Wild West Summer Weekend, Start at Sturbridge (MA) Host Conference Center at Noon. Tour to Wake Robbins Inn, Lakeville, CT. Sat. & Sun include tour of western CT and other activities. Check it out at www.capecodbritishcarclub.org.

September

1-4: Lakeville, CT – Rolex Vintage Festival, Lime Rock Park. <http://www.limerock.com/>

4: Labor Day

8-10: Watkins Glen, NY – Zippo U.S. Vintage Grand Prix. www.theglen.com

9: **Wilton, CT – Bocce, Southworth's**

14-17: Stowe, VT – British Invasion. The British Invasion was selected by the Boston Sunday Globe as their "number ONE choice for Best 10 things to do within a days drive of Boston". The Vermont State Chamber of Commerce in 2004 recognized the British Invasion for the third time as "One of the Top Ten Events in Vermont". <http://www.britishinvasion.com/>

15-17: Pownal, VT - 40th Annual Bennington/Hemmings Car Show & Swap Meet, VT Route 7, 9 mi south of Bennington. <http://www.bennington.com/attractions/events/carshow.html>

17: Southbury, CT – Roaring '20s Car Show (36th Annual), Southbury Training School Grounds. The biggest one-day car show in New England! <http://www.roaring-20s.org/>



GAS UP YOUR MG'S AND THEN GAS UP YOURSELVES AT

NY/Conn's Progressive Pot Luck Dinner

Date:

Saturday,
April 29th
Rain or Shine

Time & Place:

11:00AM to 1:00PM
Hurd's
11 Partridge Drive
Ridgefield, CT
06877

2:00PM to 3:00PM
Chuang Yen Monastery
2020 Rte. 310
Carmel, NY 10512

3:30PM to 5:00PM
Judy Johnson's
75A Heritage Hills
Somers, NY 10589
914-844-7199-cell

RSVP:

Phone, mail or email:
Sandy or Jan Hurd
(203) 438-2796

e-mail:

sanjanhurd@sbcglobal.net

By

Wednesday,
April 26th

It seems that no matter where NY/Conn'ers gather, there is often an MG or two, but there is always food! This event is no exception as we kick off the season with our traditional Progressive Dinner. Instead of pigging out at just one place, we manage to drive a few miles in our MGs in between courses.

We'll start at the home of Sandy & Jan Hurd at 11:00AM in Ridgefield, CT with the dinner part of the day. At about 1:00PM we will leave for a back roads trip to the Chuang Yen Monastery in Carmel, NY (www.baus.org) for a guided tour of the facility arranged by Patricia Silvestre. There is no fee for the tour, however, there is such a thing in Buddhism as "Dana", which is a donation. Everyone should fill free to donate in the appropriate donation boxes if they so wish. After the tour we will return to Somers to 75 A Heritage Hills to Judy's for desserts (and a quick drive thru the complex in case you are interested in moving there).

This should be in the vicinity of 3:30PM for those joining us at the tail end of the day. Which by the way, you are welcome to do if you can't make it to any of the earlier events. While we hope you'll be able to be with us for the entire day, you are welcome to join or leave as best fits your schedule.

So, no excuses, everyone should be able to make it for at least part of the day. When you call to RSVP, let Sandy or Jan know when and for how long you will be joining the group AND what you will bring to help out. Sandy has suggested casseroles and salads to help out at her place and your favorite dessert if you want to contribute to Judy's portion of the day. (Don't even think about bringing that dessert left over from our twice cancelled Sweetheart Sundae!)



Directions start on page 10.



April 2006

Sun	Mon	Tue	Wed	Thu	Fri	Sat
						1
2	3	4	5	6	7	8
9	10	11	12	13	14	15
16	17	18	19	20	21	22
23	24	25	26	27	28	29
30						

Schedule of Events (NY/Conn events in bold)

If you would like to make corrections to or additions to this list, please forward information to director@nyconn.org

April

19—23: Carlisle, PA – Spring Carlisle. Don't miss the 2006 event of the spring, Carlisle Fairgrounds. Thousands of cars; thousands of vendors; millions of items to see, touch and purchase. More than 100,000 visitors attended the 2005 show. <http://www.carsatcarlisle.com>

23: St. George's Day (England's patron saint) Drive your British cars!

29: Ridgefield, CT – Carmel, NY – Progressive Dinner, hosted by the Hurd's, Judy Johnson & Patricia Sullivan. See details in this issue.

29: British Auto Jumble (Tent.)

May

4-5: Brookline, MA – Bonhams & Butterfields Collector Car Auction Preview Days, Larz Anderson Museum. <http://www.bonhams.com/>, www.mot.org

6: Brookline, MA – Bonhams & Butterfields Collector Car Auction, Larz Anderson Museum.

6: Rhinebeck, NY – Hot Rods & Customs Car Show. www.rhinebeckcarshow.com

6: Succasunna, NJ – Britfest 2006, – Information and entry forms available at <http://www.mgcnj.org/> or contact: Charles: c.tregidgo@att.net.

7: Rhinebeck, NY – Antique Car show,; www.rhinebeckcarshow.com

7: CT – Cinco de Mayo Run, Ct MG Club. www.ctmgclub.com

13: NJ-PA – 2006 North American Annual Cecil Kimber Run, NJ; mgdriv-

(Continued on page 5)



Schedule of Events (Cont.)

event, which also includes vintage motorcycles and aircraft. Saturday's *Concours d'Elegance* will feature domestic cars. Sunday's *Concours Europa* will be devoted solely to European sports, touring, and competition cars. Many of the cars to be shown each day are rare, limited-production, or one-off vehicles. 10 AM to 5 PM each day. www.greenwichconcours.com.

4: Waterford, CT – "British by the Sea" sponsored by the CT MG Club. The site, Harkness Memorial State Park, includes gardens with flowers donated and planted by the club. 10 AM to 4 PM. www.ctmgclub.com

10-11: Vernon, CT – Jaguar Club of Southern New England (JCSNE) Concours d'Elegance & Slalom, Quality Inn,; www.jcna.com/clubs/jcsne

10-11: Manchester, VT – 20th annual Hildene Classic Car Show and MG Drivers Club Drive-In. MG is the featured marque. Contact: Richard Miller, (908) 713-6251; mgdriversclub@hotmail.com; Applications and schedules of events are available at <http://www.mgdriversclub.com> or www.manchestervermont.net.

10-11: Manchester, VT – VSCCA's 54th Annual Mt. Equinox Hillclimb. <http://www.equinoxmountain.com/skylinedrive/race.htm>

14: Flag Day

17-18: Watkins Glen, NY – Historic Sports Car GP, www.theglen.com.

17-18: France – Le Mans 24 hours.

18: Father's Day

18: Branford, CT – Branford Festival Classic Car Crusie,; www.branfordfestival.com

21-25: Gatlinburg, TN – MG 2006 - All-MG Register Convention, Great Smoky Mountains, web: <http://www.mg2006.com>

24: Somers, CT – The Cars are the Stars Show & Shine, Rt. 83, Pleasant View Cafe and Golf Facility, 11 Am to 4 PM; www.carsarethestars.com

25: Bridgewater, CT – Housatonic Valley Region Antique Automobile Club of America (HVRAACA) 31st Annual Antiques and Classic Auto Show, 25 classes through 1979 & Special Interest. 9AM-3PM. Judging starts at noon. Bridgewater Fairgrounds, Rt. 133, <http://pages.cthome.net/esigns/carshow.html>.

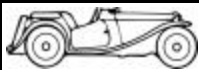
Bob Brown - 203-775-4719; rbrow06@chartern.net

July

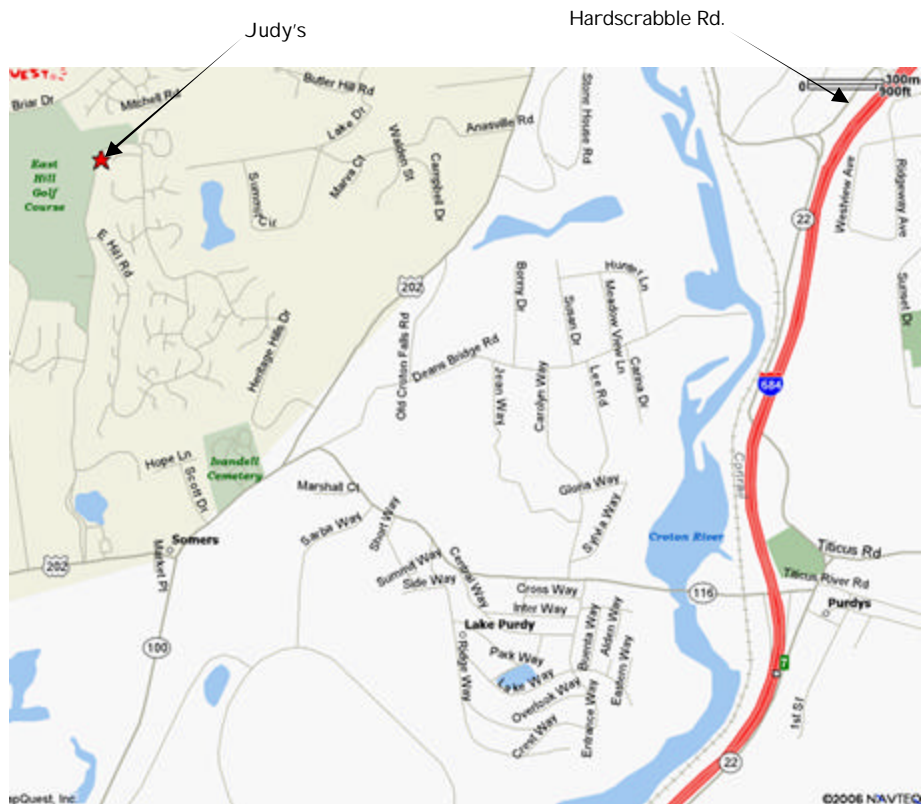
4: Independence Day

7-9: France – Le Mans Classic

9: CT MG Club Five Point Rally



To Judy Johnson's



Take 684 to Exit 8-Hardscrabble rd. Take Hardscrabble Rd. west (or south). Left at next light onto Rt.22 South. Go about 1 mile & take a right onto Rt 116-crosses over 684. Go to next light. left onto Rt. 202/100 to next light. Right at light (Elephant Hotel-Town Hall on your right.) Go to next light. Turn right into Heritage Hills. Opposite golf course-turn right onto East hill Drive. Go up hill to 69-76 on your right. Turn there & go up the hill. Turn right & park or park in adjoining

areas. Judy is 75A-over near the mail-boxes.



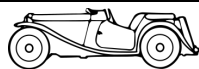
Schedule of Events (Continued)

ersclub.com. Limited to 35 cars - Registration fee: \$22.00 per person. This multi MG Club event will tour rural roads in the Hunterdon County, New Jersey, and Bucks County, Pennsylvania area. The day will begin at 9:00 a.m. at Sky Manor Airport (48 Sky Manor Road, Pittstown, NJ 08867, 908-996-3442), fifteen minutes from Exit 15 of Interstate 78 (East or West). Rain or Shine!

- 14: Mother's Day
- 19-21: Carlisle, PA – Carlisle Import-Kit/Replicar Nationals at the Carlisle Fairgrounds. Features vintage imports of all nationalities, styles, years and condition; club gatherings; competitions and contests; activities galore, and the largest kit car and replicar event in America. There will be vendors selling everything you can think of and well over a thousand cars and kit cars to see and, perhaps, purchase. <http://www.carsatcarlisle.com>
- 20-21: Brockenhurst, U.K – Beaulieu Motor Mart/Autojumble. events@beaulieu.co.uk
- 20-21: Lake Placid, NY – Festival of Cars,; www.lakeplacidfestivalofcars.com
- 21: Bedford, NY – Friedler's Thumbs-Up Tour
- 21: Waterford, CT – CT MG Club Planting Day, Harkness State Park, CT. www.ctmgclub.com
- 27-6/4: British Car Week— This celebrated week has been chosen as a commemoration for the wonderful British automobiles of the past, and their enthusiastic owners, who have so proudly kept them maintained for all to see and appreciate many years after their production. This special week is intended for all British car owners to get their British cars out on the roads in their little corner of the world, and give them the exposure they so rightly deserve. <http://www.britishcarweek.org/>
- 28: Lakeville, CT – Hemmings Sports and Exotic Car show, 10 AM to 3 PM; Lime Rock Park, info at tgrande@hemmings.com or www.limerock.com
- 29: Old Lyme, CT – Lyme-Old Lyme Lions Club Antique Car Show, Lyme Art Academy, 9 AM to 2 PM, 250 car max; www.lymeoldlymelions.com

June

- 2-3: Lakeville, CT – Dare to be British 2006 Weekend, hosted by Brits-on-the-Hudson, Eastern NY MGA Club, VSCCA, and the Jaguar Owners Club at Lime Rock Park. Information and registration forms at www.britsofthehudson.org or contact Les Neumann at lesneumann@optonline.net.
- 3-4: Greenwich, CT – The eleventh annual *Greenwich Concours d' Elegance* will be held at Roger Sherman Baldwin Park. Included is a display of both vintage and contemporary power boats. Now acclaimed as one of the top events of its kind in the country, the *Greenwich Concours* helps benefit **Americares**, the international relief organization. *Automobile Magazine* is the Title Sponsor of the



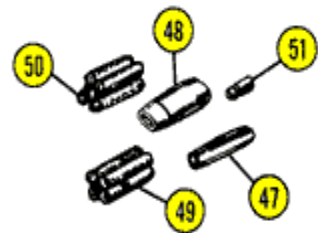
Electrical Problems?

From: owner-mgs@autox.team.net

I've had nearly everything fail in my electrics, including the headlight switch simply falling apart when depressed. However, the sneakiest fault was in those dozens of wonderful "Lucar" connectors--the little rubber-coated in-line connections. One of my failures was simply that one--or more--of these connectors had simply fallen apart and no longer carried electricity. Another time, they were corroded to the point of no longer functioning. Don't bother to clean them, as they are, first of all, cheap, and second are so old they probably will crumble before long.

Save yourself tons of future hassles and get a couple dozen of these things--don't forget about 4 or 5 double connectors--and replace every single connector on your car. Use that electrolite lubricant, too.

The headlights have some connectors under the horizontal metal support immediately behind the grille, and these are very likely where any trouble of this sort starts. Jay Donoghue, 72 B-GT, 66 Mustang



From the Moss Catalog:

47	162-000	\$0.80	Wire Connector 1-way
48	161-600	\$0.95	Wire Connector 2-way
49	161-700	N/A	Wire Connector 4-way
50	161-710	\$8.65	Wire Connector 5-way
51	162-200	\$0.30	Wire Tip

Reminder: MG-TD Parts Available

By Jan Hurd

Marty Habeck gave me his stock of MG TD parts. Some of the parts such as body metal (cowl, doors, gas tanks) and steering rack assembly are things that we never hope to need but others are spares. I have a complete generator, tach box, coil and small parts (nuts and bolts, points etc) which I will carry for NY/Conn use. All big parts are available to NY/Conn members gratis on an "as needed" basis. I will check everything for operation and carry what I can but may need some storage help for trips to GOF's etc. For parts availability, contact Jan Hurd directly (see inside front cover for contact info).



To Chung Yen Monastery



2020 Route 301, Carmel, NY 10512

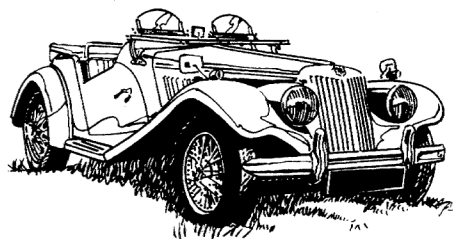
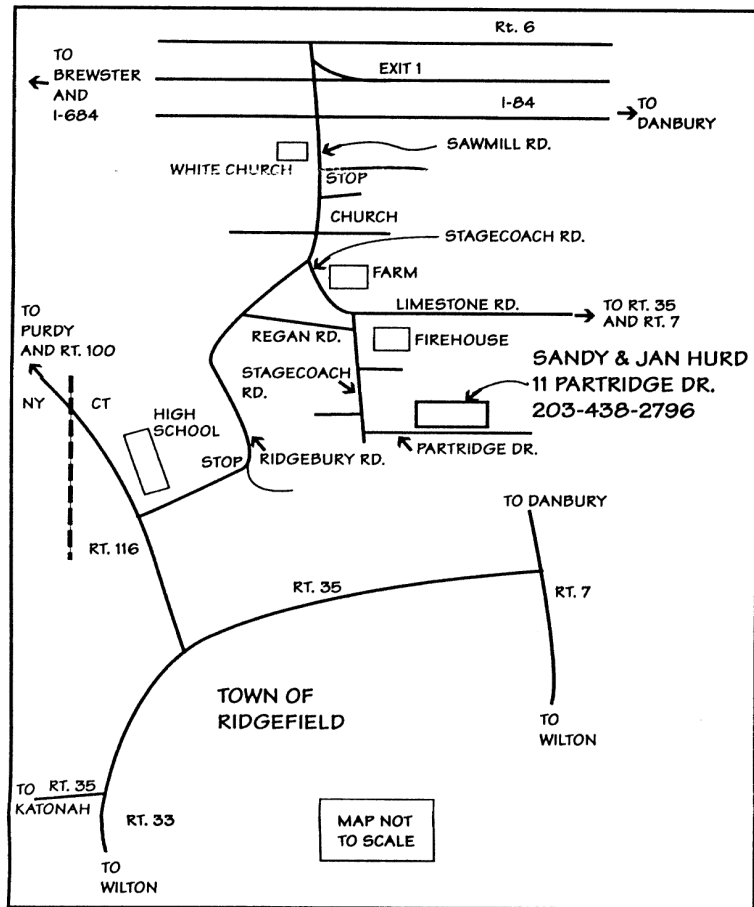
From New York City: Take I-87 Major Deegan Expressway North. Take Exit 5 Route 100 (Central Avenue) North. Stay left until the second traffic light. Take Sprain Brook Parkway North which continues onto Taconic Parkway North, take the Route 301 East exit (towards Carmel). The Monastery is approximately 1.7 miles on the left side of the road.

From Connecticut: Take I-84 West to Lake Carmel Exit 18. Turn left off of exit ramp and turn right at the light onto Route 52. Turn left at the overhead blinker onto Farmer Mills Road and follow the road to its end. Turn right at the stop sign onto Route 301. The Monastery is approximately 1.6 miles on the right side of the road.



Directions for Progressive Dinner

To Hurd's:



Going to MG2006:

Register on line at <http://www.frappr.com/mq2006attendees>.

So far 125 Members have!!



MG 2006: Gatlinburg, TN

Well, folks, the greatest MG meet in at least the last five years, and perhaps even in the last 10 years is gathering steam. If you are planning on going and haven't made your room reservations yet, I urge you to do so ASAP (that means As Soon As Possible). Many of the hotels have already reached capacity so rooms are becoming scarce. I think the hotel that the T Register is using (The Glenstone Lodge) is completely booked now, although it wouldn't hurt to check anyway. There may have been some cancellations.

At this point, I have nine NY/Conn groups going to Gatlinburg and, as far as I know, staying at the Glenstone Lodge (although I haven't heard from Gilnack's, Flax's, Beck, or Stout with regard to hotels). Most of us are leaving on Monday, June 19th and planning on a 3-day drive to MG2006. Included in this group and driving MGs are: Cathy & Charley Robinson, Janet & Ralph Gilnack and Andrea & Len Fanelli. Leaving on the 19th but trailering are Ann & Dick DiRenno and Marianna & Ron Stout. The Callo's are planning on leaving on Tuesday, the 20th and are trailering. The Hurd's are planning to drive their B down and may leave earlier than the rest of us. Curt Beck is definitely trailering but undecided on what cars he will take or when he will leave and the Flax's remain our mystery couple as they haven't indicated when they are leaving, where they are staying or how they are getting there. If they are taking Zippy, I'd like to share the driving with them...that was FUN!, right Ed?

If you are planning on going, please

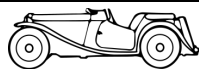
let me know. We would love to have you join us as it's the camaraderie that makes these trips the most fun! Drop me a note (Charley-contact info on inside cover) and I'll add you to the list.

We'll be taking a couple of different routes the first day because we are starting from such divergent points, but we are all planning on meeting up at the Fairfield Inn in Chambersburg, PA (I-81 at Exit 14—122 Wayne Ave. 717-264-1200) the first night (6/19-about 320+ miles). The second day on the road will take us to the Hampton Inn in Wytheville, VA (I-81 at I77, 950 Peppers Ferry Rd; 276-228-6090; 6/20-about 313 mi.). From there we will make our way into Gatlinburg (about 185 mi.) in time for the BBQ Social Meet n' Greet at the Glenstone Lodge on Wednesday, June 21 at 6:00PM.

We're planning on eating cheap along the way and some of the places we are staying don't serve alcohol so you may want to bring your own food and booze for the journey. Everyone will need to make their own reservations for the trip down, and I'd suggest doing that sooner, rather than later.

Most of us are planning to make the return trip in two days, leaving early Sunday morning with a stop at the Holiday Inn-Harrisonburg, VA (Exit 247A off I-81) 1400 E Market St., 22801; 877-477-5817.

Schools will be letting out and summer travel season will be in full gear so rooms will be hard to come by. **MAKE YOUR RESERVATIONS NOW!** Let me know if you want to join our merry little band and if you're already on the list, give me your details as soon as you can. It WILL be a great time!



For Sale:



1966 MGB Roadster, Mineral blue w/biscuit interior, white Factory hardtop, SVRA Log Book, Fab-Tek engine (Carillo, JE, Vintage race cam, +++) running Weber 45 DCOE, custom 12.5 gal ATL fuel cell, 4-synch close ratio w/overdrive. No DNF's, always first to finish of street-driven cars in group. Does 1:11's at Lime Rock. Includes: wire wheels with Yokohama's for street, Hoosiers on k.o. alloys & Dunlops for racing; MSX Cross-flow head with manifolds for either twin DCOE's or 1-3/4" SU's (included); Custom roll bar with removable diagonal bracing that passes tech yet allows hard or soft tops (biscuit) to be used; tonneau, 3.90, 4.30 & 4.55; Crane ign.; both louvered aluminum & steel hoods; and much more. At home in rush hour traffic or on the race track. Over \$40,000 in receipts. Asking \$20,000. More pictures at:

<http://www.homestead.com/mgclub/files/photo34.htm>

<http://www.homestead.com/ctmgclub/files/photoh/photo94.htm>

<http://www.homestead.com/ctmgclub/files/photoh/photo125.html>

<http://www.homestead.com/ctmgclub/files/photoh/photo125.html>



For more information, contact Norm at:
twobees@sprynet.com
or

888-722-3875

Car is in Florida



For Sale:

67 MGB Roadster

Excellent Condition, Looks & drives like a dream, 43,600 miles on restored



engine, Red, Black Leather with Red Piping, Top and Tonneau Cover in Excellent Condition, Spoke Hubs, Luggage Rack, Overdrive Transmission, Radio, Has only seen dry sunny days, kept in a heated garage.

I've owned for 5 years and purchased it from it's restorer, only engine compartment and trunk compartment not fully detailed. More pictures are available upon request. A steal for \$7,900. Contact: Colleen, (845) 473-4438, cpierson@hvc.rr.com, Poughkeepsie, NY

Wanted: MG TF



WANTED:

MG-TF - Looking for a good running TF - does not have to be concourse - I want to drive it!

Contact Jay Moszynski

Phone: 519-650-3263

email: Jo.Moszynski@wcdsb.edu.on.ca